

IWB's

In The Classroom



The Basics

Let's start with the basics, the computer, the projector, the board.....

Different projectors might hook up differently with your computer so you will need to work with someone on your campus if you have not done that before.

Most IWB's get their power from your computer. The board connects with a USB plug.

The boards usually do not have an OFF or ON switch

1. After you have plugged all necessary cables, then power on your computer.
2. When you see the image of your computer desktop on the board you are ready.
3. The first thing you will need to do is **orient** the board.

Orienting the board

Your computer should already have the board "drivers" installed. Most likely someone in your technology department has already done this. Once the drivers are installed so should the software that accompanies your board.



Click on the tab to open the tools

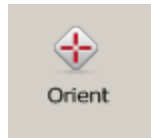
With SMARTboards you should look for the floating toolbar



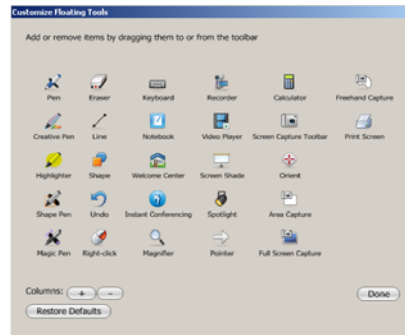
Toolbar Tab
when tools are
"closed"

You can customize your toolbar

To orient, you will want to add the icon to your toolbar



1. Click on the Gears icon
2. The additional tools will open
3. Find the Orient icon
4. Drag the icon to your toolbar
5. Click Done
6. It should now show on the floating tool bar.



The icon that looks like a gear opens to customize box

Orient Your Board

1. Click on the Orient icon on your toolbar
2. The Orient screen will open
3. You will see the icon on your board.
4. Touch the icon every time it appears.
5. When you have touched it in all 6 or 8 places your board is oriented.
6. The orient screen will disappear and you will be back to your regular computer screen desktop.

Practice using the board

Think about how you use your computer, more importantly how you use your mouse. The SMARTboard brand of IWB's uses your finger in the same way your computer uses the mouse. Your finger functions like a left-click mouse, a touch on the sensitive, interactive surface of the board and it reads it as a single left mouse click. To double click, rapidly press twice in the same spot.

Let's try practice with an application like MS Word

Try changing the toolbars, try to open a drop down menu etc.

Change the size of a window

Scroll up and down

Close window

Open a file or folder



Using the Pen Tray

The Pen Tray doesn't really hold pens, they have no ink. These are actually styluses that "write" in electronic ink. Same thing with the eraser, it doesn't physically erase anything.



How They Work:

The SMARTboard recognized the last tool removed from the pen tray as the one you want to use. When a tool is removed from the pen tray, any pressure to the board will create the effect of the tool.

This is the same with the eraser, pick up the eraser and either use it on the board, or, hold the eraser in one hand and use your finger to erase the board.

Practice using the pens and eraser

On-Screen Keyboard

How do I do a right click when I don't have a "real" mouse?.....

To the right of the pen tray buttons, one button for turning your finger into a right clicking mouse, the other to bring up the On-Screen Keyboard.



In front of the eraser you will see two buttons.....one for "right clicking" as if you had a mouse and the other is the on-screen keyboard button.

The On-screen keyboard is a virtual keyboard that lets you enter characters and text right at the SMART-board. The keyboard is easily moved into any position that is convenient, use your finger to press anywhere on the title bar at the top of the keyboards' window, and drag to anywhere on the board.

When you have an application that can display text, such as a word processing, paint or publishing program, you can type in text without leaving your place at the board. Even when you are using an application that has a place for inputting text, like Internet Explorer, you can type right into it's text field.

Try using the keyboard with MS Word or Internet Explorer

Handwriting Recognition

The on-screen keyboard has a neat feature that allows users to write right on the screen and have it converted to text print.

All it takes is a click of the blue Write Button the keyboard window and you can write with your finger, change it to typed print and insert it right into an application. You must use an application that accepts text. You can only generate text into a field that will permit it. Word, etc.



When you press the Write button a new dialog appears, use your finger to write in the top frame of the window, when you pause the letters you have printed will appear as typed text in the bottom frame of the Write window.

In the lower right hand corner of the window, press the Commit button the place your text into MS Word or whatever app you are using.

When done, press the close box.

More about Pens and tools

If you are using an application such as MS word, select a pen and write.

When you select a pen, the floating toolbar automatically opens an extended palette.



Clicking this button after you have written on the board will save your writing as a picture. It will look just like it was written.

Clicking this button after you have written on the board will turn your writing into typed text provided you are in an appropriate application.

What about using PowerPoint?

There are special buttons for using PowerPoint... “Ink aware buttons”

When you have a slide show open, and you click on one of the pens...you will see the following:



Move your PPT back one slide

Opens the Command menu that allows you to capture and save your notes, as well as change various default settings.

Moves your PowerPoint presentation forward one slide

